



INDUSTRIAL PARK REALTY

A Mid-West Terminal Affiliate
Representing Over Two Million
Square Feet of Industrial Property

WWW.MWT.CO.COM

For .PDF version or additional copies please
visit our website and select Available Properties.



81,500 TOTAL SQUARE FEET

AVAILABLE JULY 1, 2024

For Lease 4601 STILWELL, KANSAS CITY, MO.

Mid-West Terminal ~ Quality & Design

LOCATION:

Executive Park, near I-435,
Chouteau Bridge, I-210, I-29 and I-35

BUILDING SIZE:

81,500 Sq. Ft. - 150 Feet x 535 Feet

OFFICE AREA:

1,500 Sq. Ft.

LOADING:

Total of 22 Truck Doors:

20 - 10' x 10' dock high truck doors
6 - pit levelers
8 - edge of dock levelers
2 - 20' x 10' dock high truck doors
Portable Drive in Ramp

CLEAR HEIGHT:

28' - 30' clear height

BAY SIZE:

33' x 37'

ELECTRICAL:

400 AMP 277/480 volt

LIGHTING:

T-5 Fluorescent High Bay w/Sensors

HEAT:

Overhead Gas Units

ACCESS:

- I-435 and the Chouteau Bridge
- I-35, M-210, and I-29
- Downtown K.C. Executive Airport
- 15 minutes to KCI Airport

FIRE PROTECTION:

E.S.F.R. system

TRUCK/AUTO PARKING:

Fenced Lot

INDUSTRIAL PARK REALTY

1700 N. Universal Avenue, Kansas City, Missouri 64120

Information furnished regarding property is from sources deemed reliable but no warranty is made as to the accuracy thereof and same is submitted subject to errors, omissions, prior sale or lease or withdrawal without notice.

Joe LaMothe

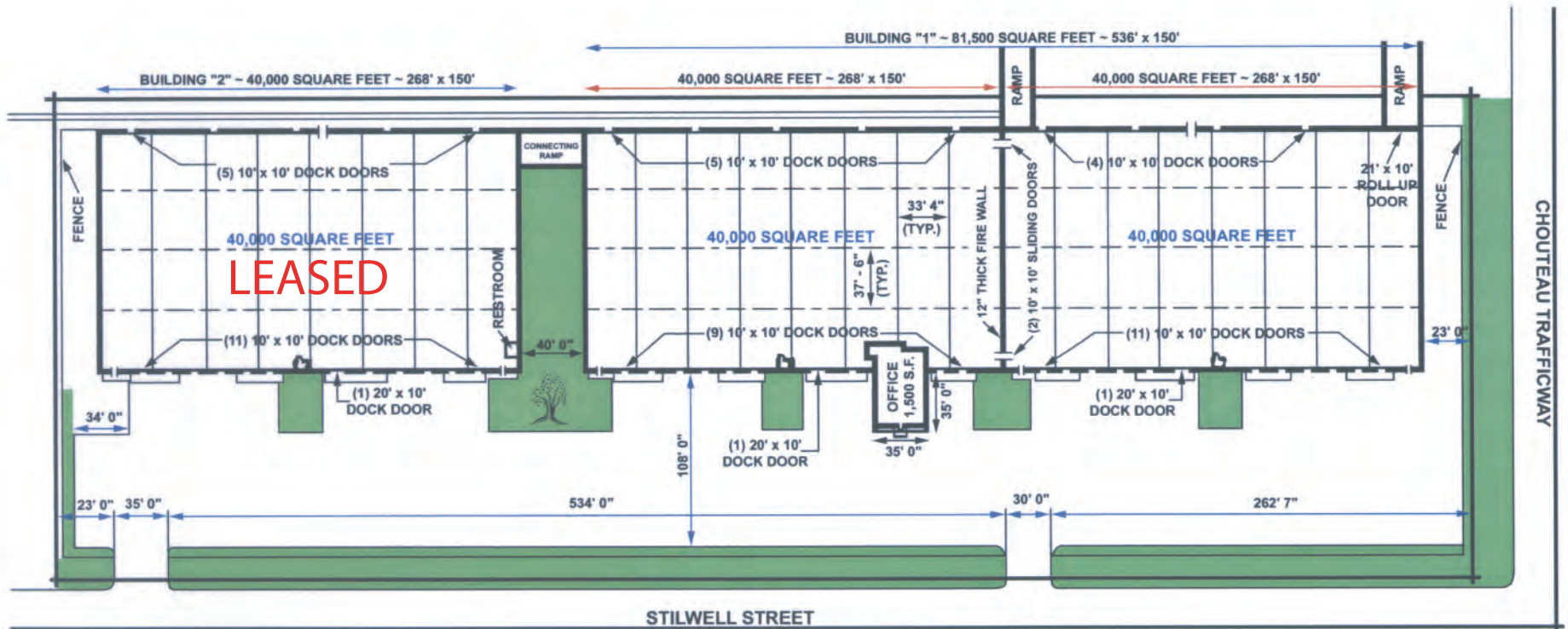
David LaMothe

Phone: 816.231.8811

www.mwtco.com

FOR LEASE

81,500 SQUARE FOOT COMPLEX



4601 STILWELL

Executive Park - Kansas City, Missouri