



INDUSTRIAL PARK REALTY

A Mid-West Terminal Affiliate
Representing Over Two Million
Square Feet of Industrial Property

WWW.IPR-MWT.COM

For .PDF version or additional copies please
visit our website and select Available Properties.



100,791 TOTAL SQUARE FEET

For Lease 5208 Stilwell Avenue, Kansas City, MO

Available May 1, 2020

Class A Building in Executive Park

LOT SIZE:

6.34 Acres; 276,371 Square Feet

LOCATION:

Intersection Southern Ave & Stilwell Ave

BUILDING SIZE:

100,791 Square Feet, 262' Deep x 416' Wide

CLEAR STACKING:

32 Feet Minimum

COLUMN SPACING:

Loading Dock 60' x 52', Building 50' x 52'

ELECTRICAL SERVICE:

800 Amp - 277/480 Volt, 3 Phase - 4 Wire

SPRINKLER SYSTEM:

E.S.F.R.

FLOOR:

7 Inch Concrete

LIGHTING:

25 FC - High Efficiency T5 lighting w/lens covers
and motion sensors

HEATING:

Direct Fired Gas Makeup Air Units - 55° at 0°

DATA:

50-pair copper and/or 24 count fiber available

TRUCK PAD DEPTH:

156' to Curb

DOCK DOORS:

1 - 12' x 14' Grade Level Drive-In

20 - 10' x 10'

10 w/ Pit Levelers & Seals

10 w/ EOD Levelers & Seals

2 - 10' x 12' w/ Pit Levelers

ACCESS:

- I-435 and the Chouteau Bridge
- I-35, M-210, and I-29
- Downtown K.C. Executive Airport
- 15 minutes to KCI Airport

OFFICE:

1,500 sf existing

CAR PARKING:

68 Car Parking

TRAILER PARKING:

7 Trailer Parking

Located inside 435 Loop
Surrounded by
Excellent Employee
Base

INDUSTRIAL PARK REALTY

1700 N. Universal Avenue, Kansas City, Missouri 64120

Joe LaMothe

David LaMothe

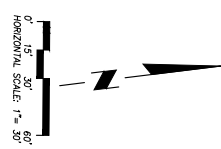
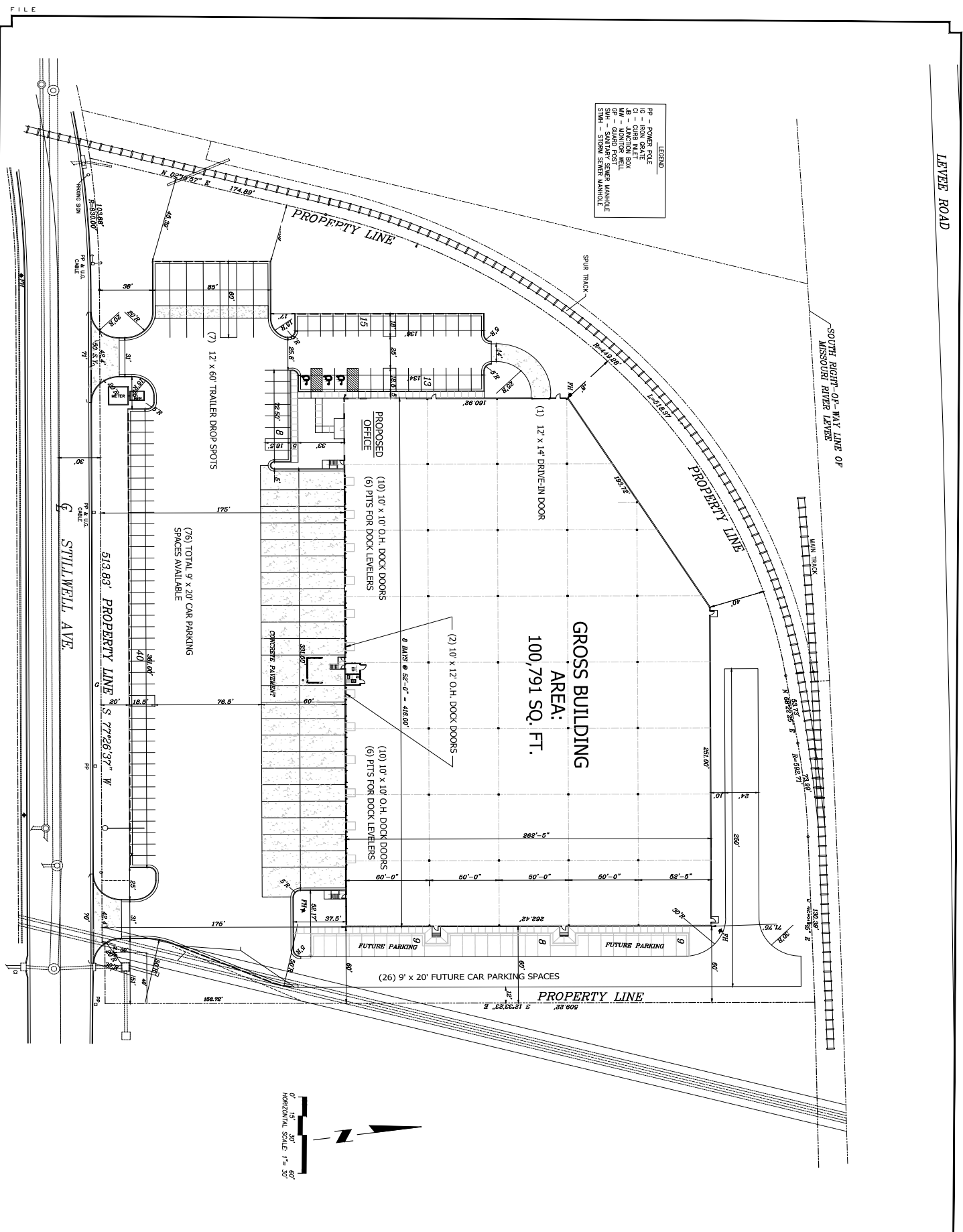
Phone: 816.231.8811

www.ipr-mwt.com

Fax: 816.231.0020

Information furnished regarding property is from sources deemed reliable but no warranty is made as to the accuracy thereof and same is submitted subject to errors, omissions, prior sale or lease or withdrawal without notice.

LEGEND
 PP - POWER POLE
 C - CURB
 JB - JUNCTION BOX
 GP - GUARD POST
 SMH - SIGN
 SSM - SIGN MOUNTING



DESIGN BY:
 DRAWN BY:
 JOB NO.:
 DATE: (CIRCLE THE YEAR)
 REVISIONS

PROPOSED NEW BUILDING FOR:
MID-WEST TERMINAL WAREHOUSE CO., INC.
 5208 STILLWELL STREET
 KANSAS CITY, MISSOURI 64120

ARCHITECTS
 1158 40th St
 Suite 130
 Kansas City, MO 64110
 (816) 242-8110
 (816) 242-9110